



# FUKUCOM COMPANY LTD.

## 福 靈 有 限 公 司

FLAT P, 3/F., EVEREST INDUSTRIAL CENTRE, 396 KWUN TONG ROAD,  
KWUN TONG, KOWLOON, HONG KONG.

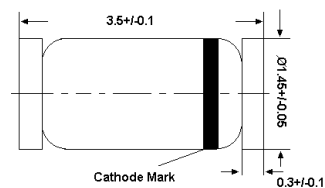
TEL: 852-2790 0314      FAX: 852-2790 0206

### ST LL60P

#### Silicon Schottky Barrier Diode

Characteristics equivalent to or better than 1N60P  
ideal for used in detection or for switching on the  
radio, TV, etc.

LL-34



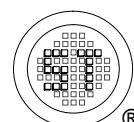
Glass case MiniMELF  
Dimensions in mm

#### Absolute Maximum Ratings (T<sub>a</sub> = 25 °C)

Parameter	Symbol	Value	Unit
Peak Reverse Voltage	V <sub>RM</sub>	45	V
Reverse Voltage	V <sub>R</sub>	20	V
Average Rectified Output Current	I <sub>O</sub>	50	mA
Peak Forward Current	I <sub>FM</sub>	150	mA
Surge Forward Current	I <sub>surge</sub>	500	mA
Junction Temperature	T <sub>j</sub>	125	°C
Storage Temperature Range	T <sub>stg</sub>	- 55 to + 150	°C

#### Characteristics at T<sub>a</sub> = 25 °C

Parameter	Symbol	Min.	Max.	Unit
Forward Current at V <sub>F</sub> = 1 V	I <sub>F</sub>	4	-	mA
Reverse Current at V <sub>R</sub> = 10 V	I <sub>R</sub>	-	50	μA
Total Capacitance At V = -1 V, f = 1 MHz	C <sub>tot</sub>	-	1	pF
Rectification efficiency at V <sub>i</sub> = 2 Vrms, R = 5 KΩ	η	55	-	%





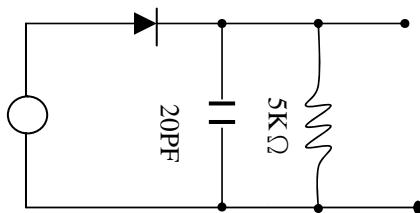
# FUKUCOM COMPANY LTD.

福靈有限公司

FLAT P, 3/F., EVEREST INDUSTRIAL CENTRE, 396 KWUN TONG ROAD,  
KWUN TONG, KOWLOON, HONG KONG.

TEL: 852-2790 0314 FAX: 852-2790 0206

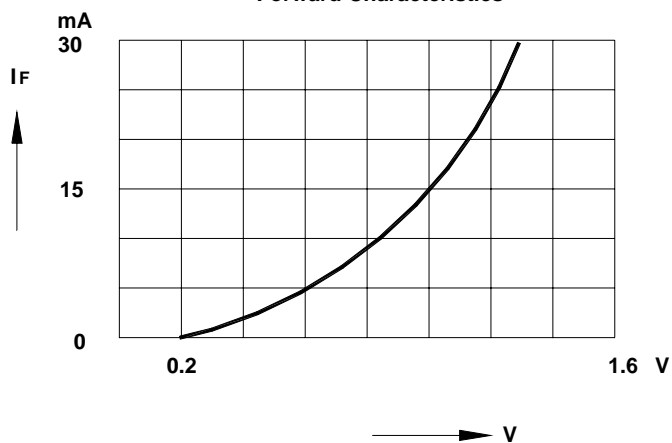
## ST LL60P



Input 2Vrms

Rectification Efficiency Measurement Circuit

Forward Characteristics



Reverse Characteristics

