



FUKUCOM COMPANY LTD.

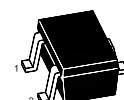
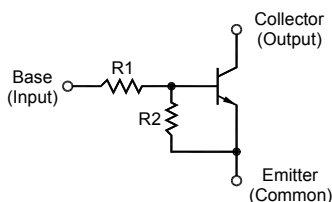
福 靈 有 限 公 司

FLAT P, 3/F., EVEREST INDUSTRIAL CENTRE, 396 KWUN TONG ROAD,
KWUN TONG, KOWLOON, HONG KONG.

TEL: 852-2790 0314 FAX: 852-2790 0206

MMDT5210W...MMDT521ZW

NPN Silicon Epitaxial Planar Digital Transistor



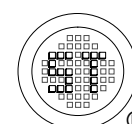
1.Base 2.Emitter 3.Collector
SOT-323 Plastic Package

Resistance Values

Type	R1 (KΩ)	R2 (KΩ)	Type	R1 (KΩ)	R2 (KΩ)
MMDT5210W	47	-	MMDT521DW	47	10
MMDT5211W	10	10	MMDT521EW	47	22
MMDT5212W	22	22	MMDT521FW	4.7	10
MMDT5213W	47	47	MMDT521KW	10	4.7
MMDT5214W	10	47	MMDT521LW	4.7	4.7
MMDT5215W	10	-	MMDT521MW	2.2	47
MMDT5216W	4.7	-	MMDT521NW	4.7	47
MMDT5217W	22	-	MMDT521TW	22	47
MMDT5218W	0.51	5.1	MMDT521VW	2.2	2.2
MMDT5219W	1	10	MMDT521ZW	4.7	22

Absolute Maximum Ratings (T_a = 25 °C)

Parameter	Symbol	Value	Unit
Collector Base Voltage	V _{CBO}	50	V
Collector Emitter Voltage	V _{CEO}	50	V
Collector Current	I _c	100	mA
Total Power Dissipation	P _{tot}	200	mW
Junction Temperature	T _j	150	°C
Storage Temperature Range	T _{stg}	- 55 to + 150	°C





FUKUCOM COMPANY LTD.

福 靈 有 限 公 司

FLAT P, 3/F., EVEREST INDUSTRIAL CENTRE, 396 KWUN TONG ROAD,
KWUN TONG, KOWLOON, HONG KONG.

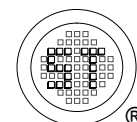
TEL: 852-2790 0314 FAX: 852-2790 0206

MMDT5210W...MMDT521ZW

Characteristics at $T_a = 25^\circ\text{C}$

Parameter	Symbol	Min.	Typ.	Max.	Unit				
DC Current Gain at $V_{CE} = 5\text{ V}$, $I_C = 10\text{ mA}$									
MMDT5218/521K/521L/521VW	h_{FE}	20	-	-	-				
MMDT5219/521D/521FW		30	-	-	-				
MMDT5211W		35	-	-	-				
MMDT5212/521EW		60	-	-	-				
MMDT521ZW		60	-	200	-				
MMDT5213/5214/521MW		80	-	-	-				
MMDT521N/521TW		80	-	400	-				
MMDT5210/5215/5216/5217W ¹⁾		160	-	460	-				
Collector Base Cutoff Current at $V_{CB} = 50\text{ V}$	I_{CBO}	-	-	100	nA				
Emitter Base Cutoff Current at $V_{EB} = 6\text{ V}$									
MMDT5210/5215/5216/5217W	I_{EBO}	-	-	0.01	mA				
MMDT5213W		-	-	0.1					
MMDT5212/5214/521D/521E/521M/521N/521TW		-	-	0.2					
MMDT521ZW		-	-	0.4					
MMDT5211W		-	-	0.5					
MMDT521F/521KW		-	-	1					
MMDT5219W		-	-	1.5					
MMDT5218/521L/521VW		-	-	2					
Collector Base Breakdown Voltage at $I_C = 10\text{ }\mu\text{A}$	$V_{(BR)CBO}$	50	-	-	V				
Collector Emitter Breakdown Voltage at $I_C = 2\text{ mA}$	$V_{(BR)CEO}$	50	-	-	V				
Collector Emitter Saturation Voltage at $I_C = 10\text{ mA}$, $I_B = 0.5\text{ mA}$	V_{CEsat}	-	-	0.3	V				
Transition Frequency at $V_{CB} = 10\text{ V}$, $-I_E = 5\text{ mA}$, $f = 100\text{ MHz}$	f_T	-	250	-	MHz				
Input Voltage (ON)									
at $V_O = 0.3\text{ V}$, $I_O = 20\text{ mA}$	$V_{I(ON)}$	-	-	3	V				
at $V_O = 0.3\text{ V}$, $I_O = 20\text{ mA}$				2.5					
at $V_O = 0.3\text{ V}$, $I_O = 2\text{ mA}$				2.5					
at $V_O = 0.3\text{ V}$, $I_O = 2\text{ mA}$				5					
at $V_O = 0.3\text{ V}$, $I_O = 2\text{ mA}$				4					
at $V_O = 0.3\text{ V}$, $I_O = 10\text{ mA}$				3					
at $V_O = 0.2\text{ V}$, $I_O = 5\text{ mA}$				3					
at $V_O = 0.3\text{ V}$, $I_O = 2\text{ mA}$				3					
at $V_O = 0.3\text{ V}$, $I_O = 5\text{ mA}$				1.1					
at $V_O = 0.2\text{ V}$, $I_O = 5\text{ mA}$				1.7					
at $V_O = 0.3\text{ V}$, $I_O = 5\text{ mA}$				1.3					
at $V_O = 0.3\text{ V}$, $I_O = 1\text{ mA}$				1.4					
MMDT521V/521L/5219/5218W									
MMDT521FW									
MMDT521TW									
MMDT521DW									
MMDT521EW									
MMDT5211W									
MMDT5212W									
MMDT5213/521KW									
MMDT521MW									
MMDT521ZW									
MMDT521NW									
MMDT5214W									

¹⁾ h_{FE} Rank Classification: Q: 160~260, R: 210~340, S: 290~460, No-rank: 160~460





FUKUCOM COMPANY LTD.

福 靈 有 限 公 司

FLAT P, 3/F., EVEREST INDUSTRIAL CENTRE, 396 KWUN TONG ROAD,
KWUN TONG, KOWLOON, HONG KONG.

TEL: 852-2790 0314 FAX: 852-2790 0206

MMDT5210W...MMDT521ZW

Characteristics at $T_a = 25\text{ }^\circ\text{C}$

Parameter	Symbol	Min.	Typ.	Max.	Unit	
Input Voltage (OFF) at $V_{CC} = 5\text{ V}$, $I_o = 100\text{ }\mu\text{A}$	$V_{I(OFF)}$	MMDT521V/521L/5211/5212/5213W	0.5	-	-	V
MMDT5218/5219/521M/521Z/521NW		0.5	-	-		
MMDT521F/5214W		0.3	-	-		
MMDT521TW		0.4	-	-		
MMDT521DW		1	-	-		
MMDT521K/521EW		0.8	-	-		
Input Resistance	R1	- 30%	MMDT5218W	0.51	+ 30%	K Ω
MMDT5219W			1			
MMDT521M/521V			2.2			
MMDT5216/521F/521L/521N/521ZW			4.7			
MMDT5211/5214/5215/521KW			10			
MMDT5212/5217/521TW			22			
MMDT5210/5213/521D/521EW	47					
Resistance Ratio	R1/R2	MMDT521MW	-	0.047	-	-
MMDT521NW		-	0.1	-	-	
MMDT5218/5219W		0.08	0.1	0.12	-	
MMDT521ZW		-	0.21	-	-	
MMDT5214W		0.17	0.21	0.25	-	
MMDT521TW		-	0.47	-	-	
MMDT521FW		0.37	0.47	0.57	-	
MMDT521VW		-	1	-	-	
MMDT5211/5212/5213/521LW		0.8	1	1.2	-	
MMDT521KW		1.7	2.13	2.6	-	
MMDT521EW		1.7	2.14	2.6	-	
MMDT521DW		3.7	4.7	5.7	-	

