



# FUKUCOM COMPANY LTD.

## 福 靈 有 限 公 司

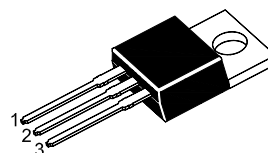
FLAT P, 3/F., EVEREST INDUSTRIAL CENTRE, 396 KWUN TONG ROAD,  
KWUN TONG, KOWLOON, HONG KONG.

TEL: 852-2790 0314 FAX: 852-2790 0206

### ST TIP122

#### NPN Silicon Power Darlington Transistor

for power switching and amplifier applications



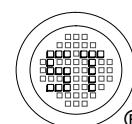
1.Base 2.Collector 3.Emitter  
TO-220 Plastic Package

#### Absolute Maximum Ratings (T<sub>a</sub> = 25 °C)

Parameter	Symbol	Value	Unit
Collector Base Voltage	V <sub>CBO</sub>	100	V
Collector Emitter Voltage	V <sub>CEO</sub>	100	V
Emitter Base Voltage	V <sub>EBO</sub>	5	V
Collector Current	I <sub>C</sub>	5	A
Collector Current (Pulse)	I <sub>CP</sub>	8	A
Base Current	I <sub>B</sub>	0.12	A
Power Dissipation (T <sub>a</sub> = 25 °C)	P <sub>C</sub>	2	W
Power Dissipation (T <sub>c</sub> = 25 °C)	P <sub>C</sub>	65	W
Junction Temperature	T <sub>j</sub>	150	°C
Storage Temperature Range	T <sub>stg</sub>	- 65 to + 150	°C

#### Characteristics at T<sub>a</sub> = 25 °C

Parameter	Symbol	Min.	Max.	Unit
DC Current Gain at V <sub>CE</sub> = 3 V, I <sub>C</sub> = 0.5 A	h <sub>FE</sub>	1000	-	-
at V <sub>CE</sub> = 3 V, I <sub>C</sub> = 3 A	h <sub>FE</sub>	1000	-	-
Collector Base Cutoff Current at V <sub>CB</sub> = 100 V	I <sub>CBO</sub>	-	0.2	mA
Collector Emitter Cutoff Current at V <sub>CE</sub> = 50 V	I <sub>CEO</sub>	-	0.5	mA
Emitter Base Cutoff Current at V <sub>EB</sub> = 5 V	I <sub>EBO</sub>	-	2	mA
Collector Emitter Sustaining Voltage at I <sub>C</sub> = 30 mA	V <sub>CEO(sus)</sub>	100	-	V
Collector Emitter Saturation Voltage at I <sub>C</sub> = 3 A, I <sub>B</sub> = 12 mA	V <sub>CE(sat)</sub>	-	2	V
Collector Emitter Saturation Voltage at I <sub>C</sub> = 5 A, I <sub>B</sub> = 20 mA	V <sub>CE(sat)</sub>	-	4	V
Base Emitter On Voltage at V <sub>CE</sub> = 3 V, I <sub>C</sub> = 3 A	V <sub>BE(on)</sub>	-	2.5	V





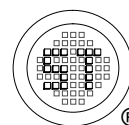
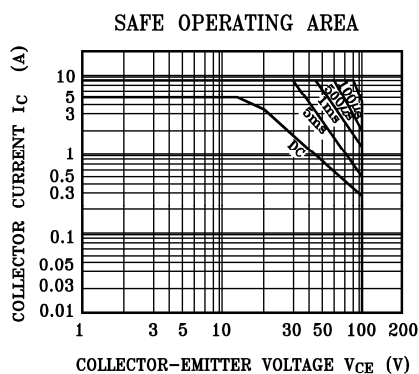
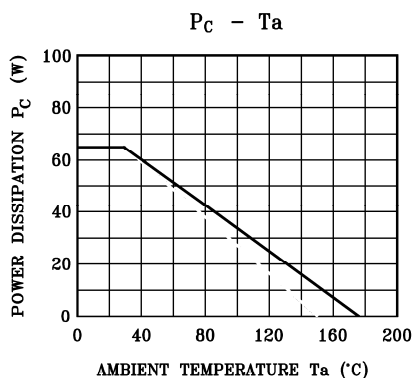
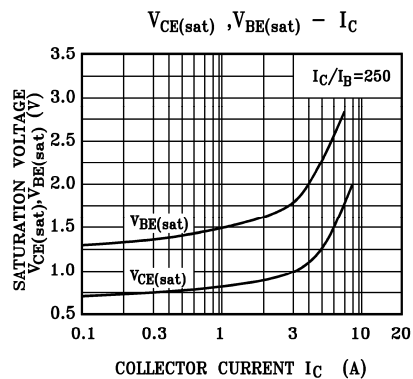
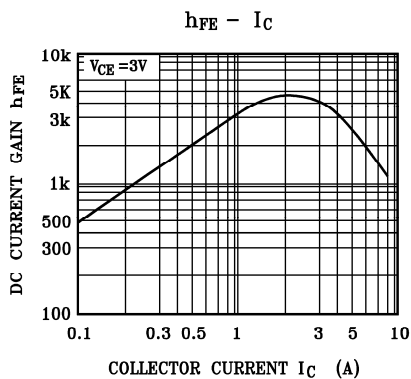
# FUKUCOM COMPANY LTD.

福靈有限公司

FLAT P, 3/F, EVEREST INDUSTRIAL CENTRE, 396 KWUN TONG ROAD,  
KWUN TONG, KOWLOON, HONG KONG.

TEL: 852-2790 0314 FAX: 852-2790 0206

## ST TIP122





**FUKUCOM COMPANY LTD.**

**福靈有限公司**

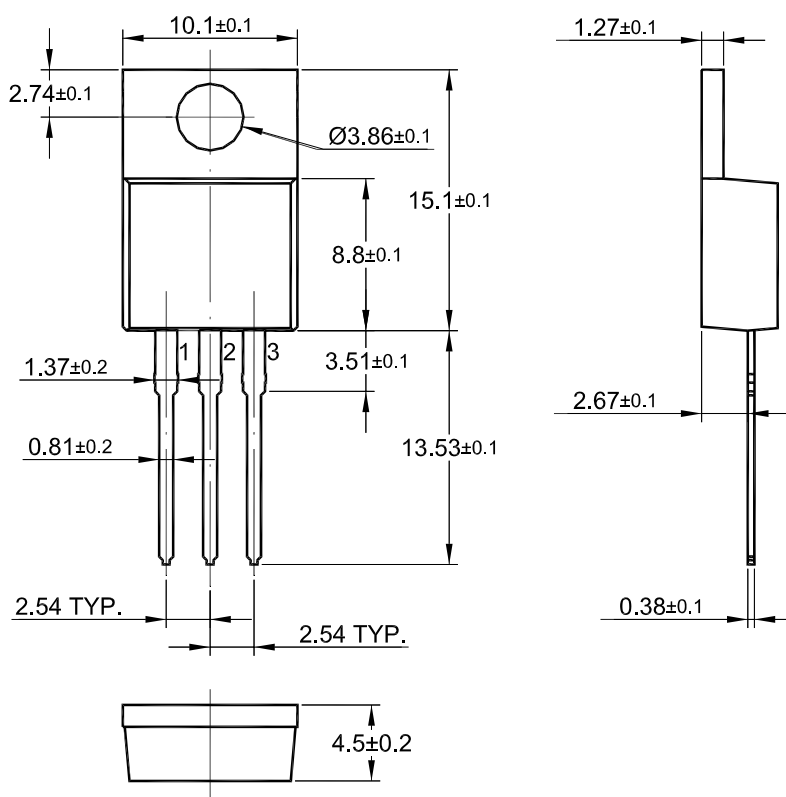
FLAT P, 3/F., EVEREST INDUSTRIAL CENTRE, 396 KWUN TONG ROAD,  
KWUN TONG, KOWLOON, HONG KONG.

TEL: 852-2790 0314 FAX: 852-2790 0206

**ST TIP122**

---

**TO-220 PACKAGE OUTLINE**



Dimensions in mm

