



FUKUCOM COMPANY LTD.

福 靈 有 限 公 司

FLAT P, 3/F., EVEREST INDUSTRIAL CENTRE, 396 KWUN TONG ROAD,
KWUN TONG, KOWLOON, HONG KONG.

TEL: 852-2790 0314 FAX: 852-2790 0206

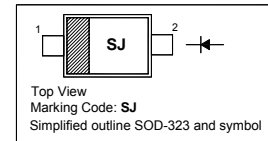
SD101AWS...SD101CWS

Surface Mount Schottky Barrier Diodes

Features

- Low forward voltage
- Low reverse capacitance

PIN	DESCRIPTION
1	Cathode
2	Anode

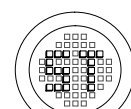


Absolute Maximum Ratings ($T_a = 25^\circ\text{C}$)

Parameter	Symbol	Value	Unit		
Peak Repetitive Reverse Voltage	V_{RRM}	SD101AWS SD101BWS SD101CWS	60 50 40	V	
Reverse Voltage		V_R	SD101AWS SD101BWS SD101CWS	60 50 40	V
Forward Continuous Current			I_{FM}	15	mA
Power Dissipation	P_d		200	mW	
Non-Repetitive Peak Forward Surge Current	I_{FSM}	at $t = 1\text{ s}$ at $t = 10\ \mu\text{s}$	50 2	mA A	
Operating and Storage Temperature Range		T_j, T_{stg}	- 65 to + 125	$^\circ\text{C}$	

Characteristics at $T_a = 25^\circ\text{C}$

Parameter	Symbol	Min.	Max.	Unit				
Reverse Breakdown Voltage at $I_R = 10\ \mu\text{A}$	$V_{(BR)R}$	SD101AWS SD101BWS SD101CWS	60 50 40	- - -	V			
Forward Voltage at $I_F = 1\text{ mA}$		V_F	SD101AWS SD101BWS SD101CWS	- - -	0.41 0.4 0.39	V		
at $I_F = 15\text{ mA}$			SD101AWS SD101BWS SD101CWS	- - -	1 0.95 0.9			
Reverse Current at $V_R = 50\text{ V}$ at $V_R = 40\text{ V}$ at $V_R = 30\text{ V}$	I_R		SD101AWS SD101BWS SD101CWS	- - -	200 200 200		nA	
Total Capacitance at $V_R = 0\text{ V}$, $f = 1\text{ MHz}$			C_T	SD101AWS SD101BWS SD101CWS	- - -		2 2.1 2.2	pF
Reverse Recovery Time at $I_F = I_R = 5\text{ mA}$, $I_{TR} = 0.1 \times I_R$, $R_L = 100\ \Omega$				t_{rr}	-		1	ns



Dated : 29/10/2009



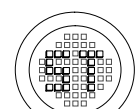
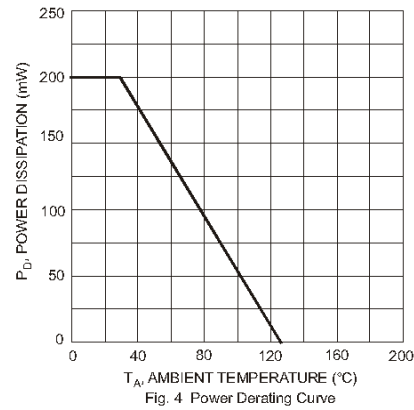
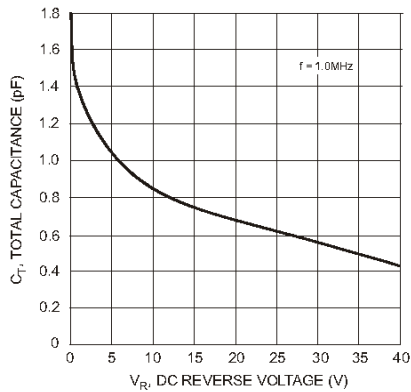
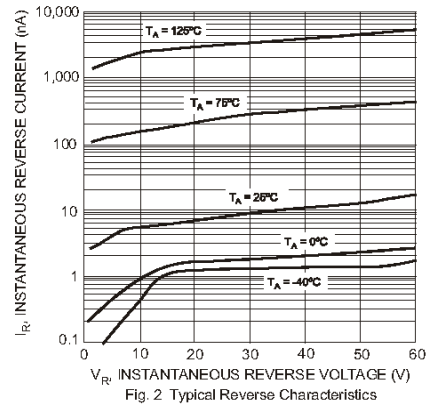
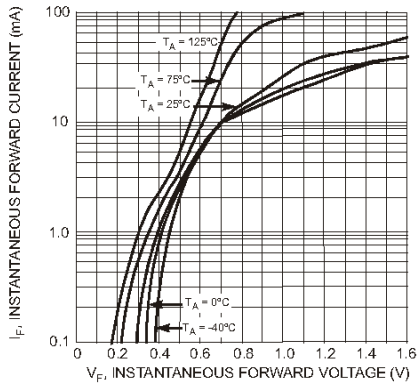
FUKUCOM COMPANY LTD.

福靈有限公司

FLAT P, 3/F., EVEREST INDUSTRIAL CENTRE, 396 KWUN TONG ROAD,
KWUN TONG, KOWLOON, HONG KONG.

TEL: 852-2790 0314 FAX: 852-2790 0206

SD101AWS...SD101CWS



Dated : 29/10/2009



FUKUCOM COMPANY LTD.

福 靈 有 限 公 司

FLAT P, 3/F., EVEREST INDUSTRIAL CENTRE, 396 KWUN TONG ROAD,
KWUN TONG, KOWLOON, HONG KONG.

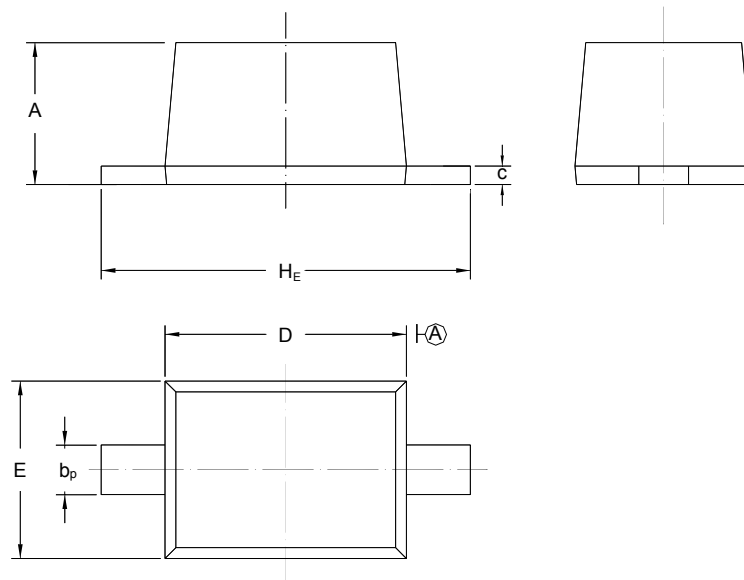
TEL: 852-2790 0314 FAX: 852-2790 0206

SD101AWS...SD101CWS

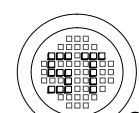
PACKAGE OUTLINE

Plastic surface mounted package; 2 leads

SOD-323



UNIT	A	b _p	C	D	E	H _E
mm	1.10 0.80	0.40 0.25	0.15 0.10	1.80 1.60	1.35 1.15	2.80 2.30



Dated : 29/10/2009