



FUKUCOM COMPANY LTD.

福 靈 有 限 公 司

FLAT P, 3/F., EVEREST INDUSTRIAL CENTRE, 396 KWUN TONG ROAD,
KWUN TONG, KOWLOON, HONG KONG.

TEL: 852-2790 0314 FAX: 852-2790 0206

MBR0520L

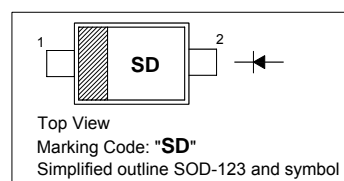
SCHOTTKY BARRIER RECTIFIER

Features

- Very low forward voltage

PINNING

PIN	DESCRIPTION
1	Cathode
2	Anode



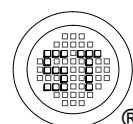
Absolute Maximum Ratings ($T_a = 25\text{ }^\circ\text{C}$)

Parameter	Symbol	Value	Unit
Maximum Repetitive Reverse Voltage	V_R	20	V
Average Rectified Forward Current	$I_{F(AV)}$	0.5	A
Non-Repetitive Peak Forward Current (Surge applied at rated load conditions halfwave, single phase, 60 Hz)	I_{FSM}	5.5	A
Thermal Resistance Junction to Lead	$R_{\theta JL}$	150	$^\circ\text{C/W}$
Thermal Resistance Junction to Ambient ¹⁾	$R_{\theta JA}$	340	$^\circ\text{C/W}$
Operating Junction Temperature Range	T_J	- 65 to + 125	$^\circ\text{C}$
Storage Temperature Range	T_{stg}	- 65 to + 150	$^\circ\text{C}$

¹⁾ FR-4 or FR-5 = 3.5 X 1.5 inches using minimum recommended land pads.

Electrical Characteristics ($T_a = 25\text{ }^\circ\text{C}$)

Parameter	Symbol	Max.	Unit
Forward Voltage at $I_F = 0.1\text{ A}$ at $I_F = 0.5\text{ A}$ at $I_F = 0.1\text{ A}$, $T_a = 100\text{ }^\circ\text{C}$ at $I_F = 0.5\text{ A}$, $T_a = 100\text{ }^\circ\text{C}$	V_F	0.3 0.385 0.22 0.33	V
Reverse Current at $V_R = 10\text{ V}$ at $V_R = 20\text{ V}$ at $V_R = 10\text{ V}$, $T_a = 100\text{ }^\circ\text{C}$ at $V_R = 20\text{ V}$, $T_a = 100\text{ }^\circ\text{C}$	I_R	75 250 5 8	μA μA mA mA



Dated : 17/08/2006



FUKUCOM COMPANY LTD.

福靈有限公司

FLAT P, 3/F., EVEREST INDUSTRIAL CENTRE, 396 KWUN TONG ROAD,
KWUN TONG, KOWLOON, HONG KONG.

TEL: 852-2790 0314 FAX: 852-2790 0206

MBR0520L

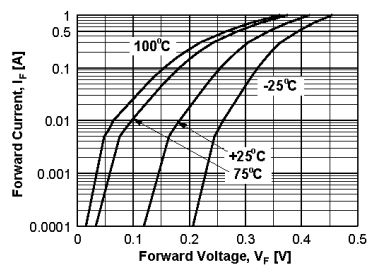


Figure 1. Forward Voltage Characteristics

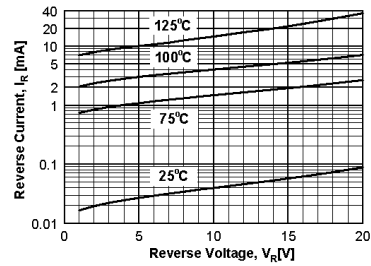


Figure 2. Reverse Current vs Reverse Voltage

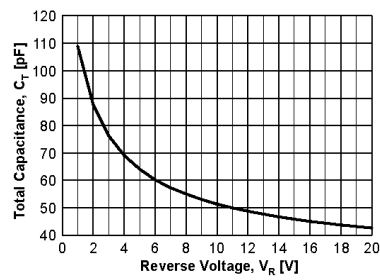
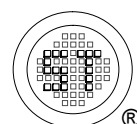


Figure 3. Total Capacitance



Dated : 17/08/2006



FUKUCOM COMPANY LTD.

福靈有限公司

FLAT P, 3/F., EVEREST INDUSTRIAL CENTRE, 396 KWUN TONG ROAD,
KWUN TONG, KOWLOON, HONG KONG.

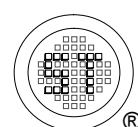
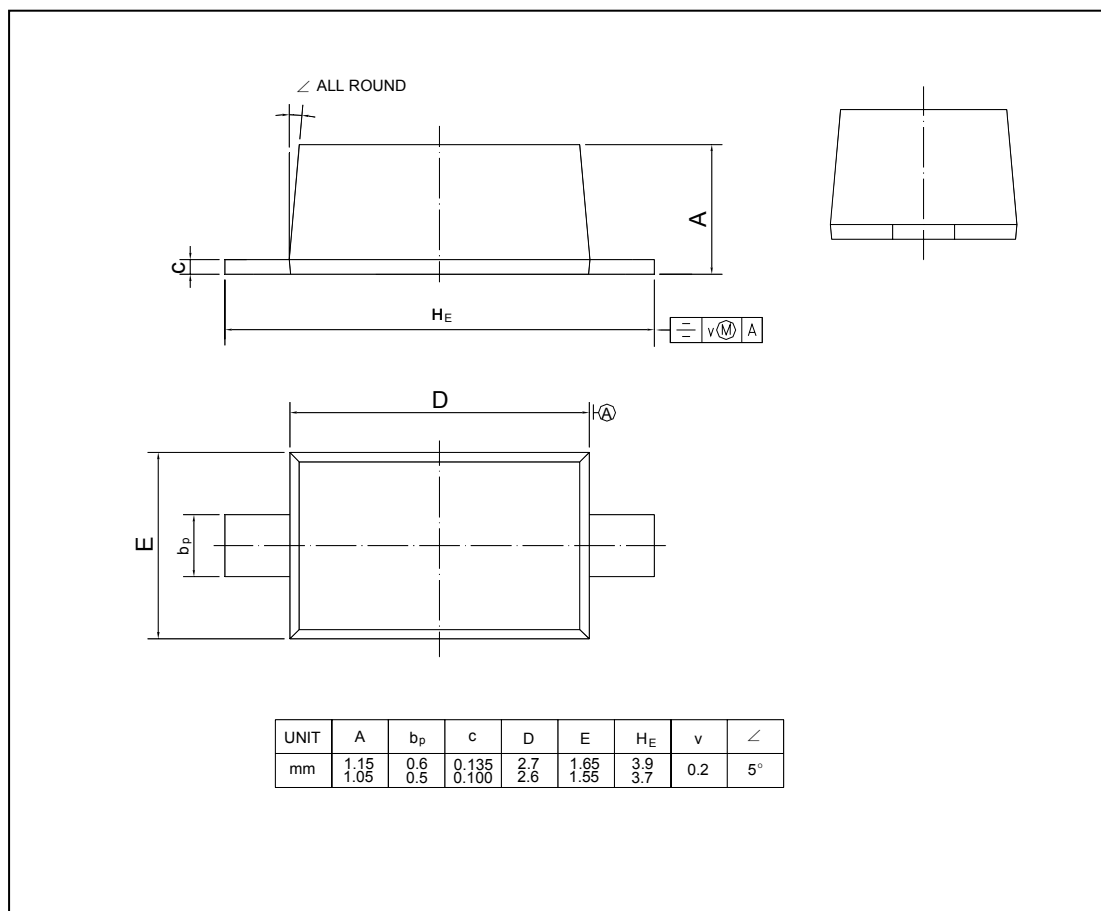
TEL: 852-2790 0314 FAX: 852-2790 0206

MBR0520L

PACKAGE OUTLINE

Plastic surface mounted package; 2 leads

SOD-123



Dated : 17/08/2006