



# FUKUCOM COMPANY LTD.

福 靈 有 限 公 司

FLAT P, 3/F., EVEREST INDUSTRIAL CENTRE, 396 KWUN TONG ROAD,  
KWUN TONG, KOWLOON, HONG KONG.

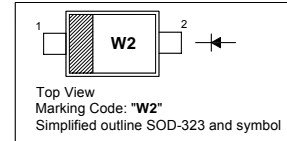
TEL: 852-2790 0314 FAX: 852-2790 0206

## BAS216WS

### Silicon Epitaxial Planar Switching Diode

#### PINNING

PIN	DESCRIPTION
1	Cathode
2	Anode

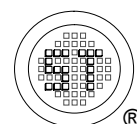


#### Absolute Maximum Ratings ( $T_a = 25^\circ\text{C}$ )

Parameter	Symbol	Value	Unit
Repetitive Peak Reverse Voltage	$V_{RRM}$	85	V
Reverse Voltage	$V_R$	75	V
Continuous Forward Current	$I_F$	250	mA
Repetitive Peak Forward Current	$I_{FRM}$	500	mA
Non-repetitive Peak Forward Surge Current	$I_{FSM}$	0.5	A
at $t = 1\text{ s}$		1	
at $t = 1\text{ ms}$		4	
Power Dissipation	$P_{tot}$	200	mW
Junction Temperature	$T_j$	150	$^\circ\text{C}$
Storage Temperature Range	$T_{stg}$	- 65 to + 150	$^\circ\text{C}$

#### Characteristics at $T_a = 25^\circ\text{C}$

Parameter	Symbol	Max.	Unit
Forward Voltage at $I_F = 1\text{ mA}$ at $I_F = 10\text{ mA}$ at $I_F = 50\text{ mA}$ at $I_F = 150\text{ mA}$	$V_F$	0.715	V
		0.855	
		1	
		1.25	
Reverse Current at $V_R = 25\text{ V}$ at $V_R = 75\text{ V}$ at $V_R = 25\text{ V}, T_j = 150^\circ\text{C}$ at $V_R = 75\text{ V}, T_j = 150^\circ\text{C}$	$I_R$	30	nA
		1	$\mu\text{A}$
		30	$\mu\text{A}$
		50	$\mu\text{A}$
Diode Capacitance at $V_R = 0\text{ V}, f = 1\text{ MHz}$	$C_{tot}$	1.5	pF
Reverse Recovery Time at $I_F = 10\text{ mA}$ to $I_R = 10\text{ mA}, I_R = 1\text{ mA}, R_L = 100\ \Omega$	$t_{rr}$	4	ns



Dated : 15/06/2009



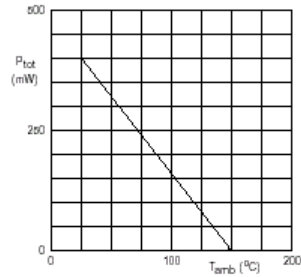
# FUKUCOM COMPANY LTD.

福 靈 有 限 公 司

FLAT P, 3/F., EVEREST INDUSTRIAL CENTRE, 396 KWUN TONG ROAD,  
KWUN TONG, KOWLOON, HONG KONG.

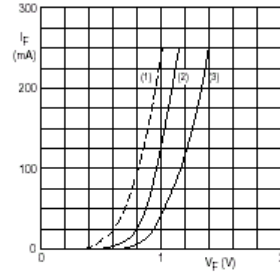
TEL: 852-2790 0314 FAX: 852-2790 0206

## BAS216WS



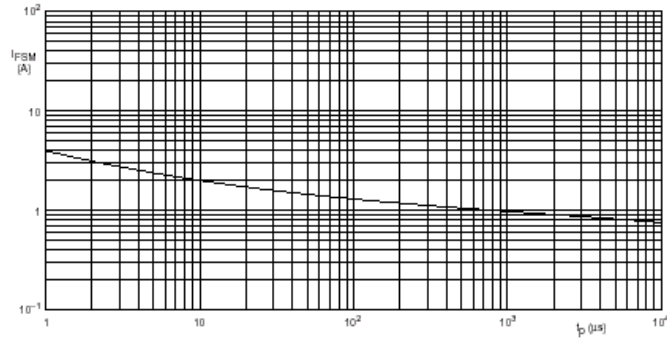
Device mounted on an FR4 printed-circuit board.

Maximum permissible total power dissipation as a function of ambient temperature.



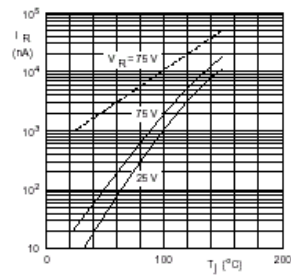
- (1)  $T_j = 100\text{ }^\circ\text{C}$ ; typical values.
- (2)  $T_j = 25\text{ }^\circ\text{C}$ ; typical values.
- (3)  $T_j = 25\text{ }^\circ\text{C}$ ; maximum values.

Forward current as a function of forward voltage.



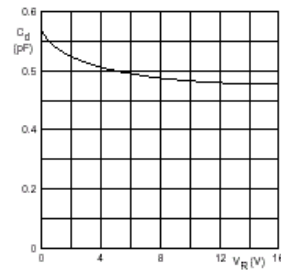
Based on square wave currents.  
 $T_j = 25\text{ }^\circ\text{C}$  prior to surge.

Maximum permissible non-repetitive peak forward current as a function of pulse duration.



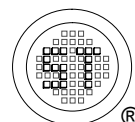
Dotted line: maximum values.  
Solid lines: typical values.

Reverse current as a function of junction temperature.



$f = 1\text{ MHz}$ ;  $T_j = 25\text{ }^\circ\text{C}$ .

Diode capacitance as a function of reverse voltage; typical values.



Dated : 15/06/2009



**FUKUCOM COMPANY LTD.**

**福 靈 有 限 公 司**

FLAT P, 3/F., EVEREST INDUSTRIAL CENTRE, 396 KWUN TONG ROAD,  
KWUN TONG, KOWLOON, HONG KONG.

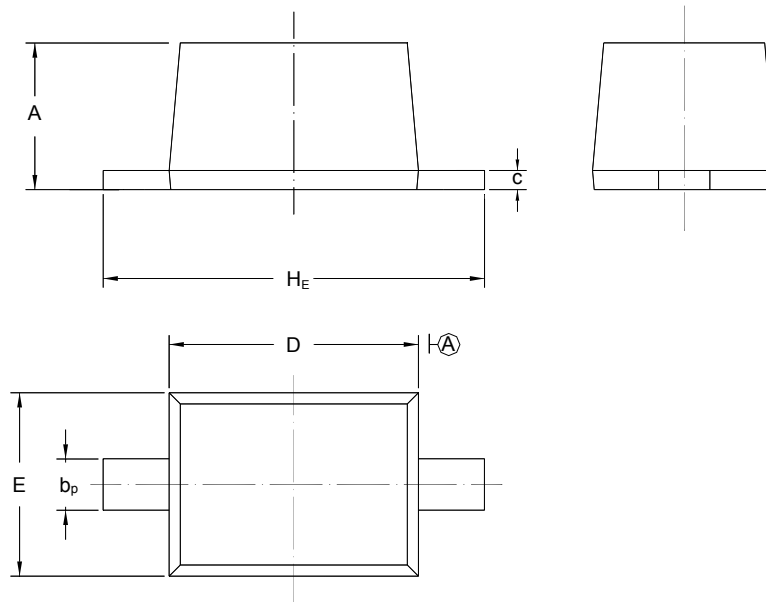
TEL: 852-2790 0314 FAX: 852-2790 0206

## BAS216WS

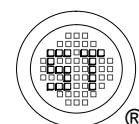
### PACKAGE OUTLINE

Plastic surface mounted package; 2 leads

SOD-323



UNIT	A	b <sub>p</sub>	C	D	E	H <sub>E</sub>
mm	1.10 0.80	0.40 0.25	0.15 0.00	1.80 1.60	1.35 1.15	2.80 2.30



Dated : 15/06/2009