



# FUKUCOM COMPANY LTD.

## 福靈有限公司

FLAT P, 3/F., EVEREST INDUSTRIAL CENTRE, 396 KWUN TONG ROAD,  
KWUN TONG, KOWLOON, HONG KONG.

TEL: 852-2790 0314 FAX: 852-2790 0206

### BAS40W1

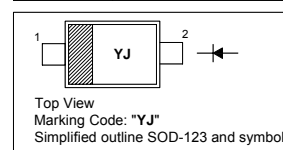
#### SURFACE MOUNT SCHOTTKY BARRIER DIODE

##### Features

- Low forward voltage
- Fast switching

##### PINNING

PIN	DESCRIPTION
1	Cathode
2	Anode

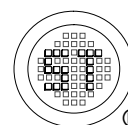


##### Absolute Maximum Ratings ( $T_a = 25\text{ }^\circ\text{C}$ )

Parameter	Symbol	Value	Unit
Repetitive Peak Reverse Voltage	$V_{RRM}$	40	V
DC Blocking Voltage	$V_R$	40	V
Forward Continuous Current	$I_F$	200	mA
Peak Forward Surge Current (at $t_p \leq 8.3\text{ ms}$ )	$I_{FSM}$	600	mA
Power Dissipation	$P_d$	200	mW
Junction Temperature	$T_J$	150	$^\circ\text{C}$
Storage Temperature Range	$T_S$	- 65 to + 150	$^\circ\text{C}$

##### Characteristics at $T_a = 25\text{ }^\circ\text{C}$

Parameter	Symbol	Min.	Max.	Unit
Forward Voltage at $I_F = 1\text{ mA}$	$V_F$	-	0.38	V
at $I_F = 40\text{ mA}$	$V_F$	-	1	V
Reverse Breakdown Voltage at $I_R = 10\text{ }\mu\text{A}$	$V_{(BR)R}$	40	-	V
Reverse Current at $V_R = 30\text{ V}$	$I_R$	-	200	nA
Total Capacitance at $V_R = 0\text{ V}$ , $f = 1\text{ MHz}$	$C_T$	-	5	pF



Dated : 04/12/2007



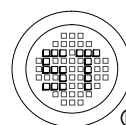
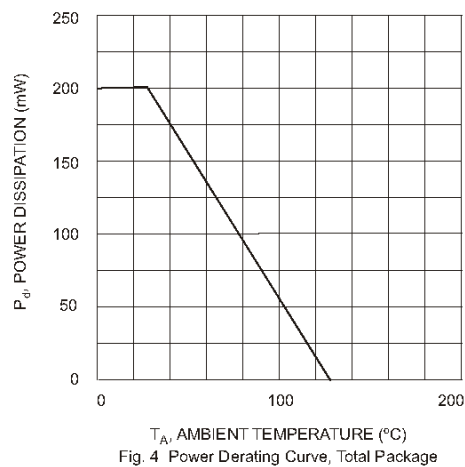
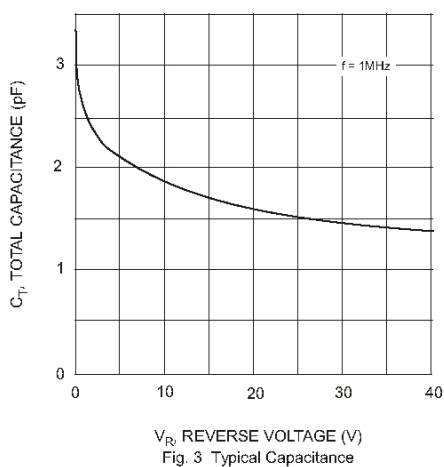
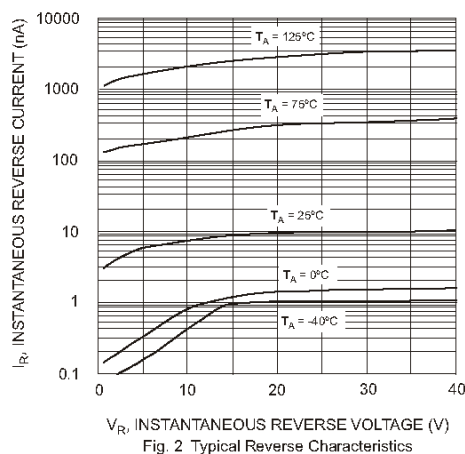
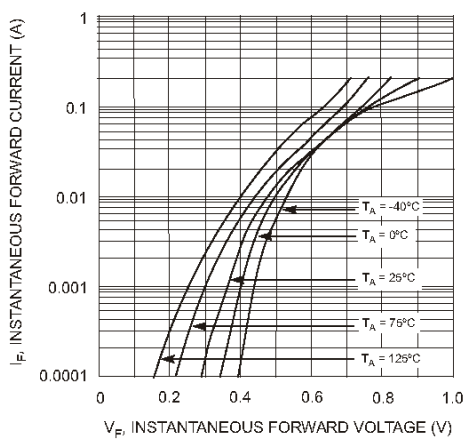
# FUKUCOM COMPANY LTD.

## 福靈有限公司

FLAT P, 3/F., EVEREST INDUSTRIAL CENTRE, 396 KWUN TONG ROAD,  
KWUN TONG, KOWLOON, HONG KONG.

TEL: 852-2790 0314 FAX: 852-2790 0206

### BAS40W1



Dated : 04/12/2007



# FUKUCOM COMPANY LTD.

福 靈 有 限 公 司

FLAT P, 3/F., EVEREST INDUSTRIAL CENTRE, 396 KWUN TONG ROAD,  
KWUN TONG, KOWLOON, HONG KONG.

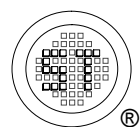
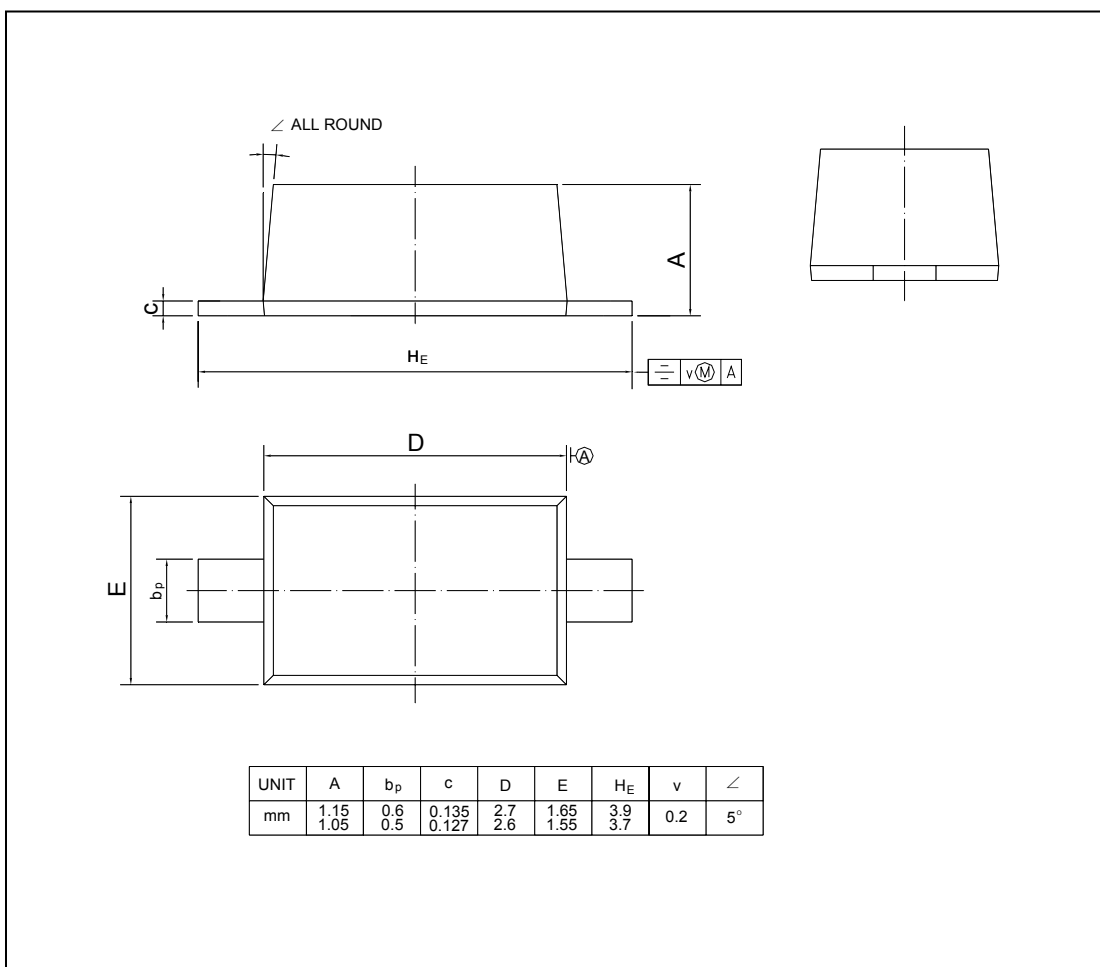
TEL: 852-2790 0314 FAX: 852-2790 0206

## BAS40W1

### PACKAGE OUTLINE

Plastic surface mounted package; 2 leads

SOD-123



Dated : 04/12/2007