



FUKUCOM COMPANY LTD.

福 靈 有 限 公 司

FLAT P, 3/F., EVEREST INDUSTRIAL CENTRE, 396 KWUN TONG ROAD,
KWUN TONG, KOWLOON, HONG KONG.

TEL: 852-2790 0314 FAX: 852-2790 0206

BAS16WS

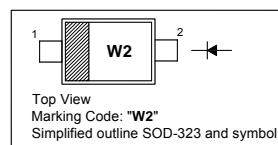
SILICON EPITAXIAL PLANAR SWITCHING DIODE

Features

- Fast switching diode

PINNING

PIN	DESCRIPTION
1	Cathode
2	Anode

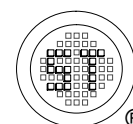


Absolute Maximum Ratings ($T_a = 25\text{ }^\circ\text{C}$)

Parameter	Symbol	Value	Unit	
Reverse Voltage	V_R	75	V	
Peak Reverse Voltage	V_{RM}	100	V	
Forward Current (Continuous)	I_F	250	mA	
Non-Repetitive Peak Forward Current	I_{FSM}	$t = 1\ \mu\text{s}$	2	A
		$t = 1\ \text{ms}$	1	A
		$t = 1\ \text{s}$	0.5	A
Power Dissipation	P_{tot}	200	mW	
Junction Temperature	T_j	150	$^\circ\text{C}$	
Storage Temperature Range	T_{stg}	- 65 to + 150	$^\circ\text{C}$	

Characteristics at $T_a = 25\text{ }^\circ\text{C}$

Parameter	Symbol	Max.	Unit
Forward Voltage at $I_F = 1\ \text{mA}$ at $I_F = 10\ \text{mA}$ at $I_F = 50\ \text{mA}$ at $I_F = 150\ \text{mA}$	V_F	0.715	V
		0.855	
		1	
		1.25	
Reverse Leakage Current at $V_R = 75\ \text{V}$ at $V_R = 25\ \text{V}$, $T_j = 150\text{ }^\circ\text{C}$ at $V_R = 75\ \text{V}$, $T_j = 150\text{ }^\circ\text{C}$	I_R	1	μA
		30	
		50	
Diode Capacitance at $V_R = 0\ \text{V}$, $f = 1\ \text{MHz}$	C_{tot}	2	pF
Reverse Recovery Time at $I_F = 10\ \text{mA}$ to $I_R = 10\ \text{mA}$, $I_R = 1\ \text{mA}$, $R_L = 100\ \Omega$	t_{rr}	6	ns



Dated : 07/04/2009



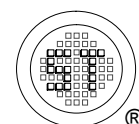
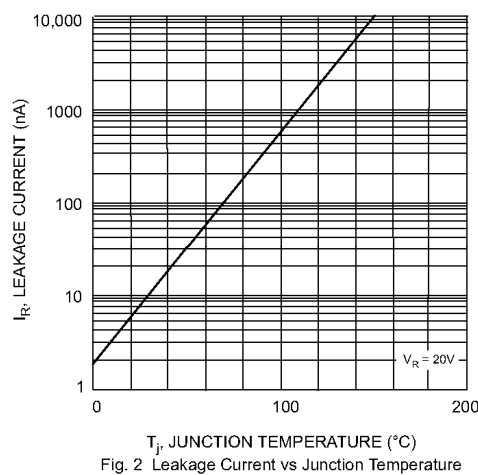
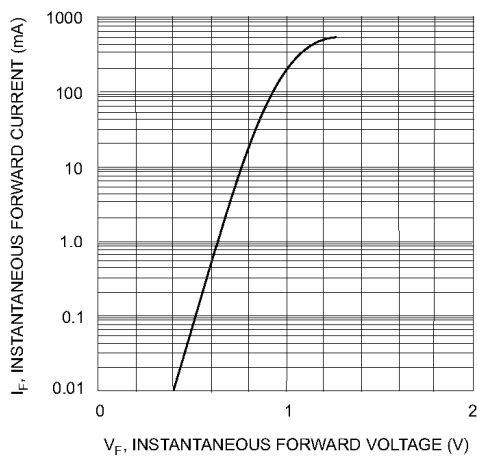
FUKUCOM COMPANY LTD.

福 靈 有 限 公 司

FLAT P, 3/F., EVEREST INDUSTRIAL CENTRE, 396 KWUN TONG ROAD,
KWUN TONG, KOWLOON, HONG KONG.

TEL: 852-2790 0314 FAX: 852-2790 0206

BAS16WS



Dated : 07/04/2009



FUKUCOM COMPANY LTD.

福 靈 有 限 公 司

FLAT P, 3/F., EVEREST INDUSTRIAL CENTRE, 396 KWUN TONG ROAD,
KWUN TONG, KOWLOON, HONG KONG.

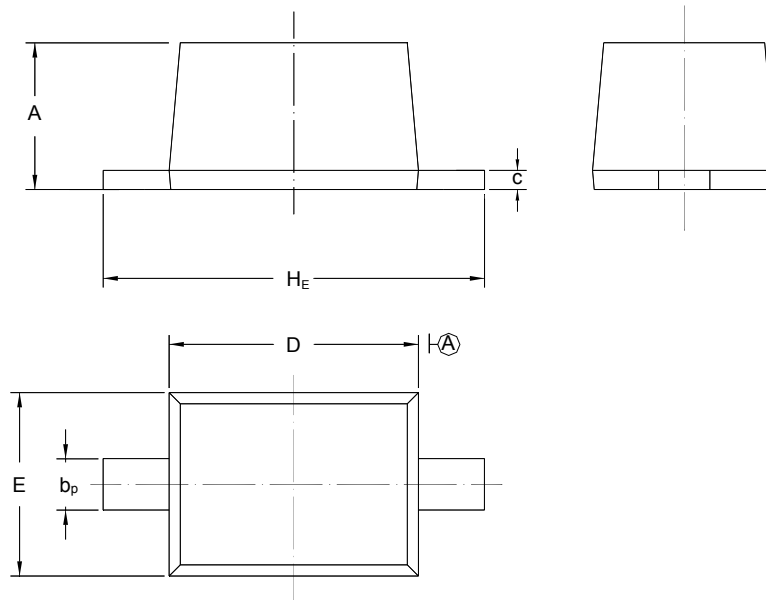
TEL: 852-2790 0314 FAX: 852-2790 0206

BAS16WS

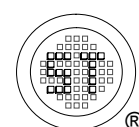
PACKAGE OUTLINE

Plastic surface mounted package; 2 leads

SOD-323



UNIT	A	b _p	C	D	E	H _E
mm	1.10 0.80	0.40 0.25	0.15 0.00	1.80 1.60	1.35 1.15	2.80 2.30



Dated : 07/04/2009