



FUKUCOM COMPANY LTD.

福靈有限公司

FLAT P, 3/F., EVEREST INDUSTRIAL CENTRE, 396 KWUN TONG ROAD,
KWUN TONG, KOWLOON, HONG KONG.

TEL: 852-2790 0314 FAX: 852-2790 0206

1SV270

SILICON EPITAXIAL PLANAR DIODE VARIABLE CAPACITANCE DIODE

Features

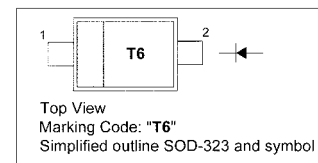
- High capacitance ratio
- Small package
- Low series resistance

Applications

- VCO for UHF band radio

PINNING

PIN	DESCRIPTION
1	Cathode
2	Anode

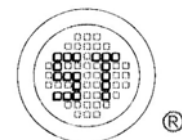


Absolute Maximum Ratings ($T_a = 25\text{ }^\circ\text{C}$)

Parameter	Symbol	Value	Unit
Reverse Voltage	V_R	10	V
Junction Temperature	T_j	125	$^\circ\text{C}$
Storage Temperature Range	T_{stg}	- 55 to + 125	$^\circ\text{C}$

Characteristics at $T_a = 25\text{ }^\circ\text{C}$

Parameter	Symbol	Min.	Max.	Unit
Reverse Voltage at $I_R = 1\text{ }\mu\text{A}$	V_R	10	-	V
Reverse Current at $V_R = 10\text{ V}$	I_R	-	3	nA
Capacitance at $V_R = 1\text{ V}$, $f = 1\text{ MHz}$	C_{1V}	15	17	pF
Capacitance at $V_R = 4\text{ V}$, $f = 1\text{ MHz}$	C_{4V}	7.3	8.7	pF
Capacitance Ratio	C_{1V}/C_{4V}	1.8	-	-
Series Resistance at $V_R = 1\text{ V}$, $f = 470\text{ MHz}$	r_s	-	0.5	Ω



SEMTECH

Dated : 01/09/2006



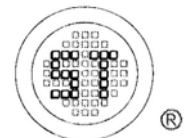
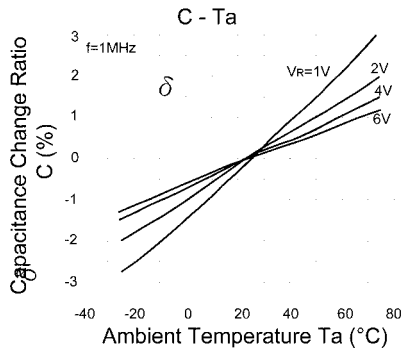
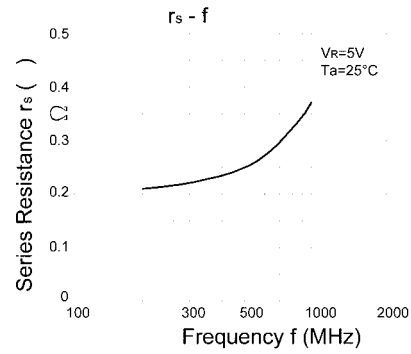
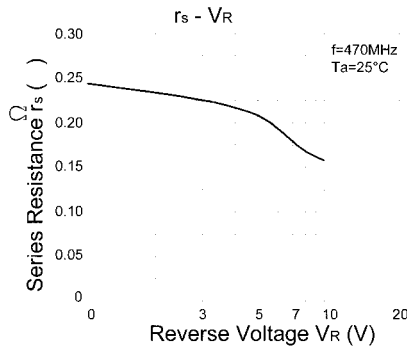
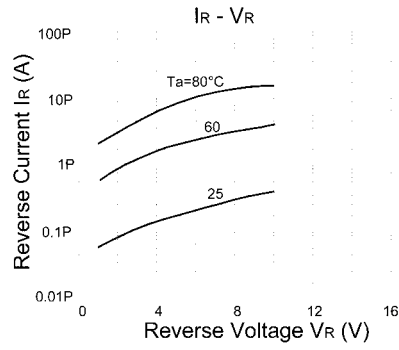
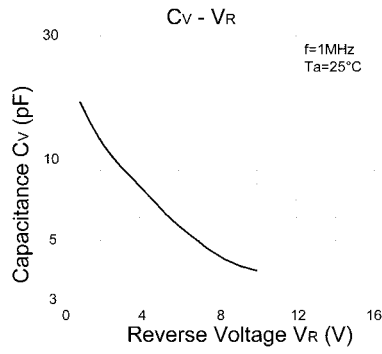
FUKUCOM COMPANY LTD.

福靈有限公司

FLAT P, 3/F., EVEREST INDUSTRIAL CENTRE, 396 KWUN TONG ROAD,
KWUN TONG, KOWLOON, HONG KONG.

TEL: 852-2790 0314 FAX: 852-2790 0206

1SV270



SEMTECH

Dated : 01/09/2006



FUKUCOM COMPANY LTD.

福靈有限公司

FLAT P, 3/F., EVEREST INDUSTRIAL CENTRE, 396 KWUN TONG ROAD,
KWUN TONG, KOWLOON, HONG KONG.

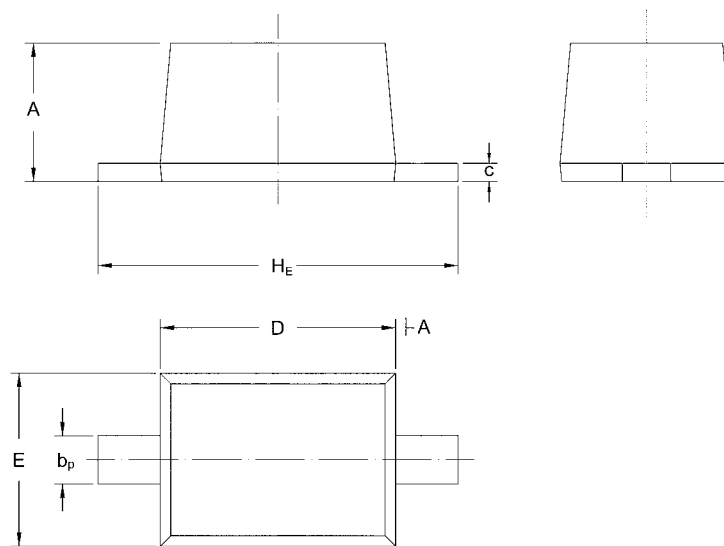
TEL: 852-2790 0314 FAX: 852-2790 0206

1SV270

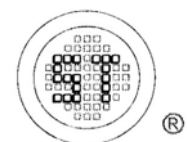
PACKAGE OUTLINE

Plastic surface mounted package; 2 leads

SOD-323



UNIT	A	b _p	C	D	E	H _E
mm	1.10 0.80	0.40 0.25	0.15 0.00	1.80 1.60	1.35 1.15	2.80 2.30



SEMTECH

Dated : 01/09/2006