



FUKUCOM COMPANY LTD.

福靈有限公司

FLAT P, 3/F., EVEREST INDUSTRIAL CENTRE, 396 KWUN TONG ROAD,
KWUN TONG, KOWLOON, HONG KONG.
TEL: 852-2790 0314 FAX: 852-2790 0206

1SS277WT

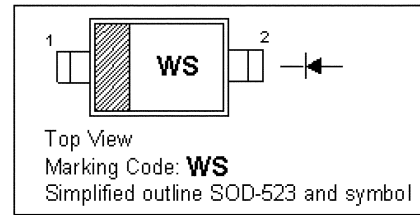
BAND SWITCHING DIODE

Applications

- Low loss band switching in VHF television tuners
- Surface mount band-switching circuits

PINNING

PIN	DESCRIPTION
1	Cathode
2	Anode

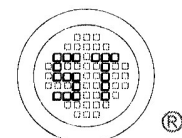


Absolute Maximum Ratings ($T_a = 25\text{ }^\circ\text{C}$)

Parameter	Symbol	Value	Unit
Continuous Reverse Voltage	V_R	35	V
Continuous Forward Current	I_F	100	mA
Power Dissipation ($T_S = 90\text{ }^\circ\text{C}$)	P_{tot}	715	mW
Junction Temperature	T_J	-65 to +175	$^\circ\text{C}$
Storage Temperature Range	T_{stg}	-65 to +175	$^\circ\text{C}$

Characteristics at $T_a = 25\text{ }^\circ\text{C}$

Parameter	Symbol	Min.	Max.	Unit
Forward Voltage at $I_F = 10\text{ mA}$	V_F	-	1	V
Reverse Voltage at $I_R = 10\text{ }\mu\text{A}$	V_R	35	-	V
Reverse Current at $V_R = 25\text{ V}$	I_R	-	50	nA
Diode Forward Resistance at $I_F = 2\text{ mA}$, $f = 100\text{ MHz}$	r_f	-	0.7	Ω
Capacitance at $f = 1\text{ MHz}$, $V_R = 6\text{ V}$	C_d	-	1.2	pF



SEMTECH

Dated : 03/05/2006



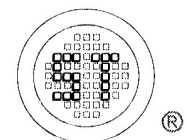
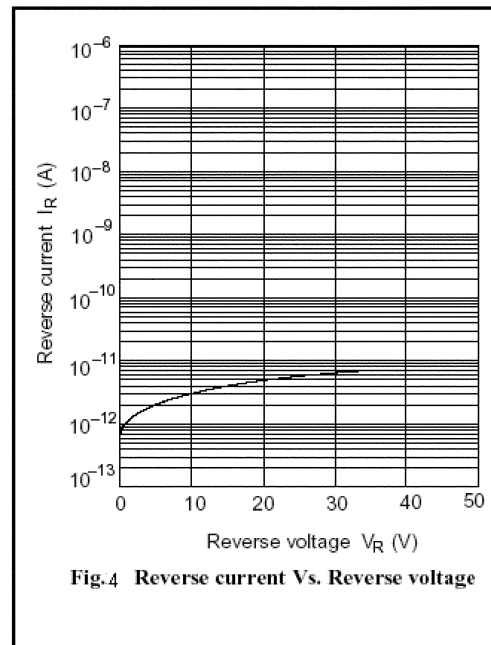
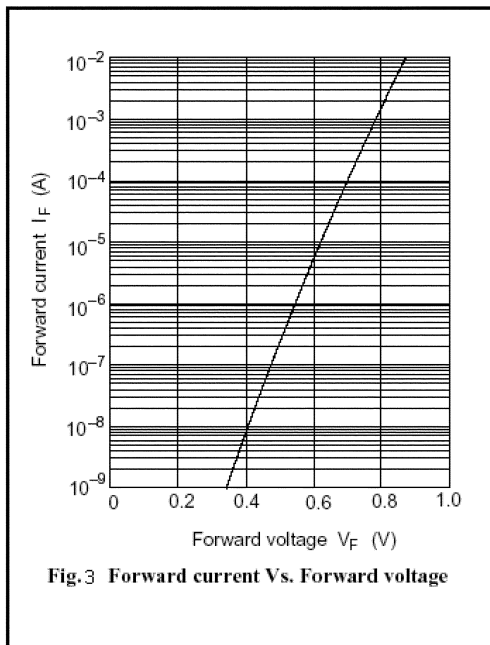
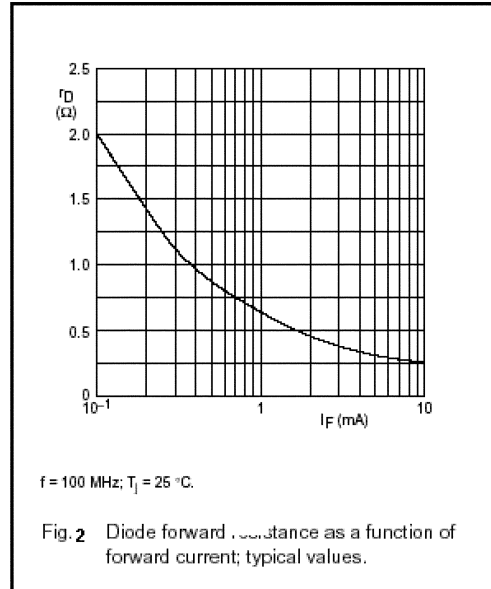
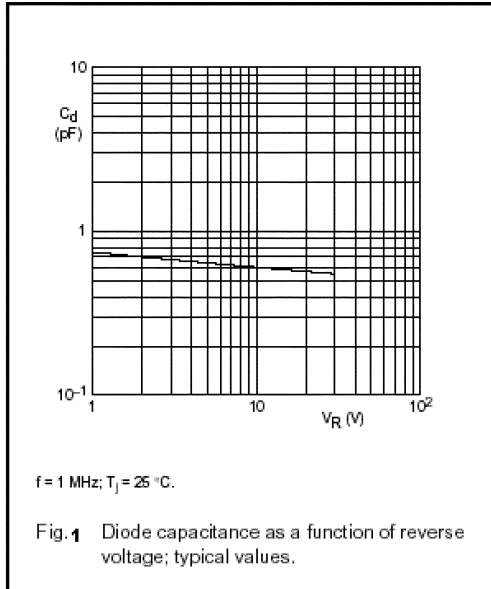
FUKUCOM COMPANY LTD.

福靈有限公司

FLAT P, 3/F., EVEREST INDUSTRIAL CENTRE, 396 KWUN TONG ROAD,
KWUN TONG, KOWLOON, HONG KONG.

TEL: 852-2790 0314 FAX: 852-2790 0206

1SS277WT



SEMTECH

Dated : 03/05/2006



FUKUCOM COMPANY LTD.

福 靈 有 限 公 司

FLAT P, 3/F., EVEREST INDUSTRIAL CENTRE, 396 KWUN TONG ROAD,
KWUN TONG, KOWLOON, HONG KONG.

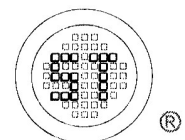
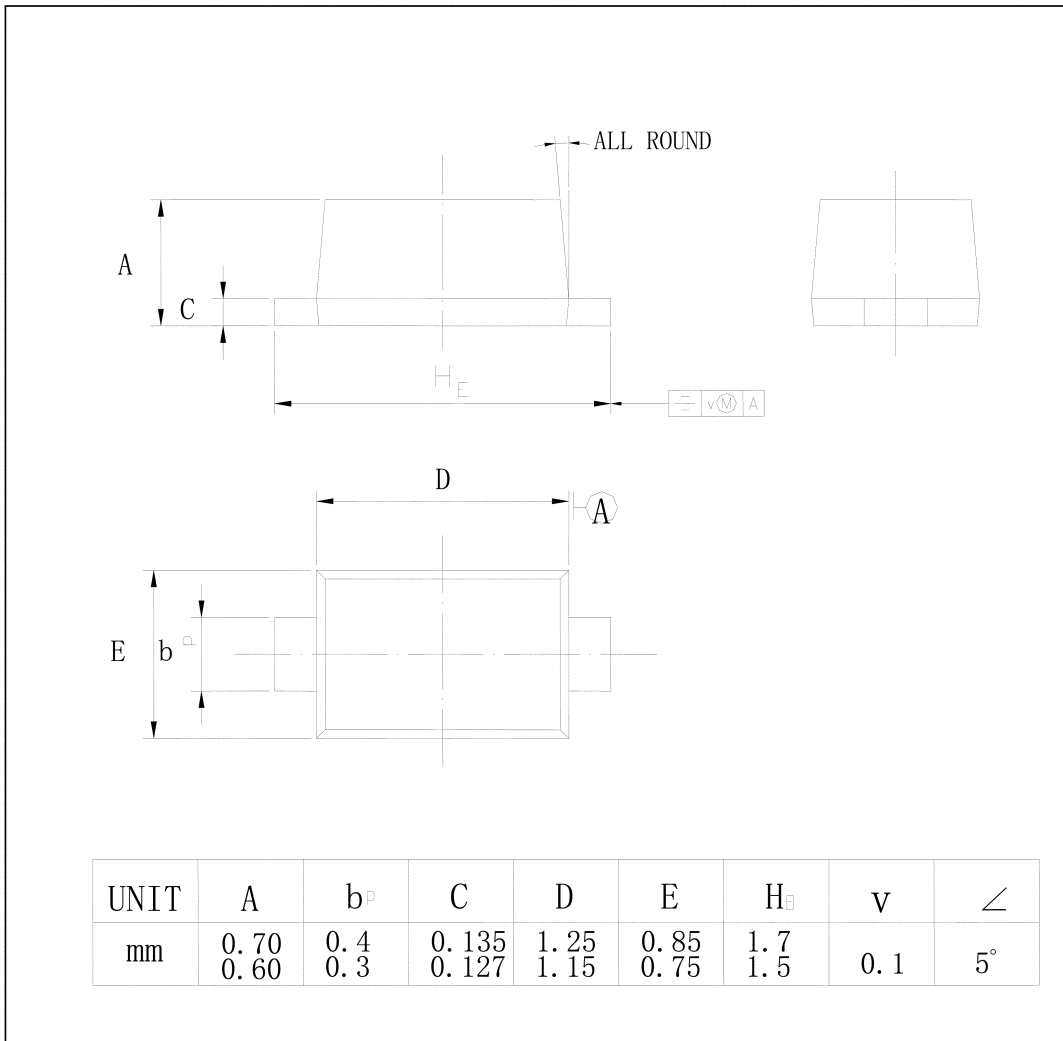
TEL: 852-2790 0314 FAX: 852-2790 0206

1SS277WT

PACKAGE OUTLINE

Plastic surface mounted package; 2 leads

SOD-523



SEMTECH

Dated : 03/05/2006