



FUKUCOM COMPANY LTD.

福 靈 有 限 公 司

FLAT P, 3/F., EVEREST INDUSTRIAL CENTRE, 396 KWUN TONG ROAD,
KWUN TONG, KOWLOON, HONG KONG.
TEL: 2790-0314 FAX: 2790-0206

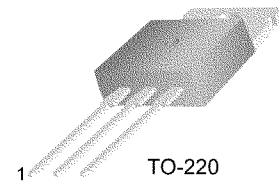
TIP105/106/107



TIP105/106/107

Monolithic Construction With Built In Base-Emitter Shunt Resistors

- High DC Current Gain : $h_{FE}=1000$ @ $V_{CE} = -4V$, $I_C = -3A$ (Min.)
- Collector-Emitter Sustaining Voltage
- Low Collector-Emitter Saturation Voltage
- Industrial Use
- Complementary to TIP100/101/102

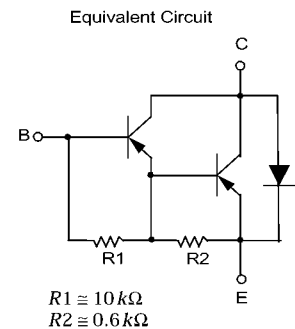


TO-220
1.Base 2.Collector 3.Emmitter

PNP Epitaxial Silicon Darlington Transistor

Absolute Maximum Ratings $T_C=25^\circ C$ unless otherwise noted

Symbol	Parameter	Value	Units
V_{CBO}	Collector-Base Voltage : TIP105	- 60	V
	: TIP106	- 80	V
	: TIP107	- 100	V
V_{CEO}	Collector-Emitter Voltage : TIP105	- 60	V
	: TIP106	- 80	V
	: TIP107	- 100	V
V_{EBO}	Emitter-Base Voltage	- 5	V
I_C	Collector Current (DC)	- 8	A
I_{CP}	Collector Current (Pulse)	- 15	A
I_B	Base Current (DC)	- 1	A
P_C	Collector Dissipation ($T_a=25^\circ C$)	2	W
	Collector Dissipation ($T_C=25^\circ C$)	80	W
T_J	Junction Temperature	150	$^\circ C$
T_{STG}	Storage Temperature	- 65 ~ 150	$^\circ C$



Electrical Characteristics $T_C=25^\circ C$ unless otherwise noted

Symbol	Parameter	Test Condition	Min.	Max.	Units
$V_{CEO(sus)}$	Collector-Emitter Sustaining Voltage : TIP105	$I_C = -30mA$, $I_B = 0$		-60	V
	: TIP106			-80	V
	: TIP107			-100	V
I_{CEO}	Collector Cut-off Current : TIP105	$V_{CE} = -30V$, $I_B = 0$		-50	μA
	: TIP106			-50	μA
	: TIP107			-50	μA
I_{CBO}	Collector Cut-off Current : TIP105	$V_{CB} = -60V$, $I_E = 0$		-50	μA
	: TIP106			-50	μA
	: TIP107			-50	μA
I_{EBO}	Emitter Cut-off Current	$V_{BE} = -5V$, $I_C = 0$		-2	mA
h_{FE}	DC Current Gain	$V_{CE} = -4V$, $I_C = -3A$ $V_{CE} = -4V$, $I_C = -8A$	1000	20000	
$V_{CE(sat)}$	Collector-Emitter Saturation Voltage	$I_C = -3A$, $I_B = -6mA$		-2	V
		$I_C = -8A$, $I_B = -80mA$		-2.5	V
$V_{BE(on)}$	Base-Emitter ON Voltage	$V_{CE} = -4V$, $I_C = -8A$		-2.8	V
C_{ob}	Output Capacitance	$V_{CB} = -10V$, $I_E = 0$, $f = 0.1MHz$		300	pF



FUKUCOM COMPANY LTD.

福 靈 有 限 公 司

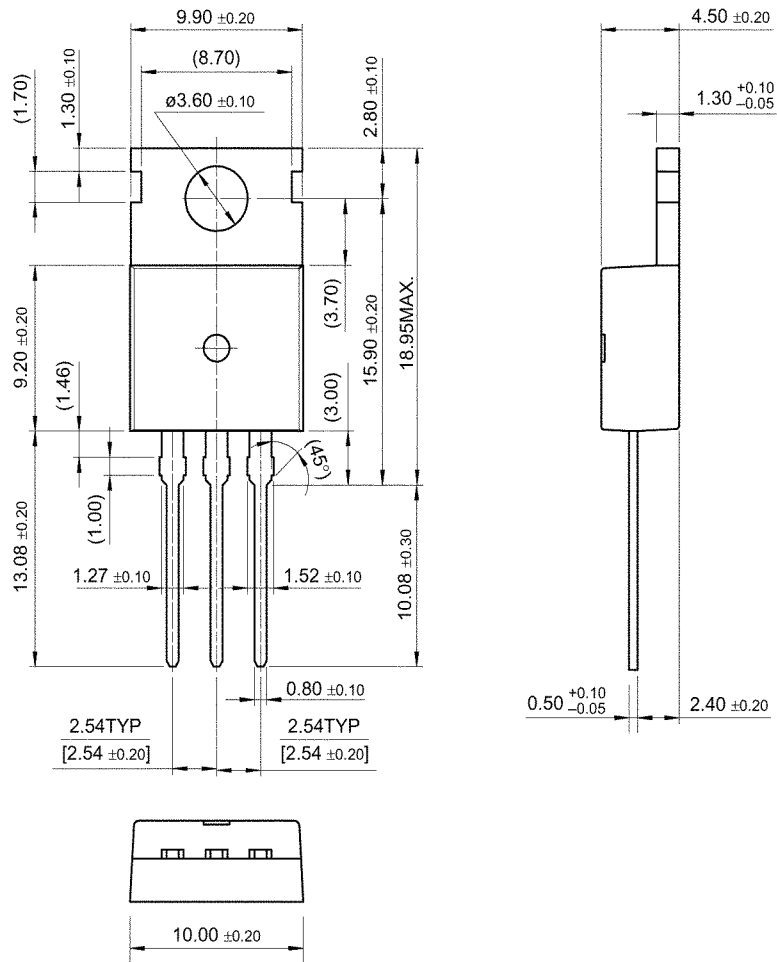
FLAT P, 3/F., EVEREST INDUSTRIAL CENTRE, 396 KWUN TONG ROAD,
KWUN TONG, KOWLOON, HONG KONG.

TEL: 2790-0314 FAX: 2790-0206

TIP105/106/107

Package Demensions

TO-220



Dimensions in Millimeters



FUKUCOM COMPANY LTD.

福 靈 有 限 公 司

FLAT P, 3/F, EVEREST INDUSTRIAL CENTRE, 396 KWUN TONG ROAD,
 KWUN TONG, KOWLOON, HONG KONG.
 TEL: 2790-0314 FAX: 2790-0206

TIP105/106/107

Typical Characteristics

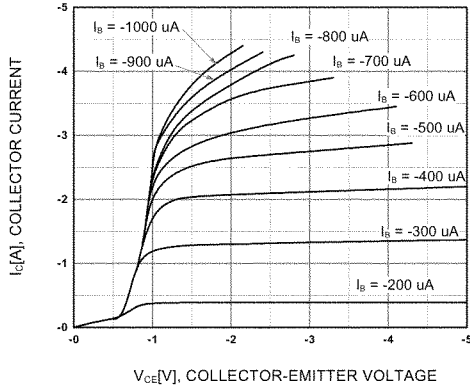


Figure 1. Static Characteristic

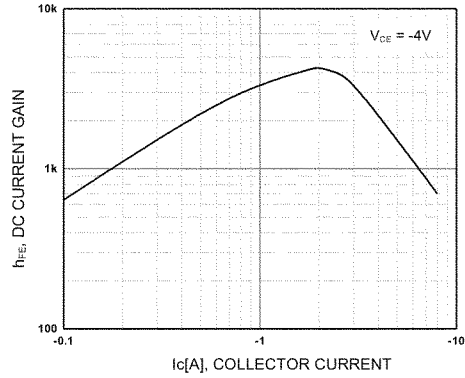


Figure 2. DC current Gain

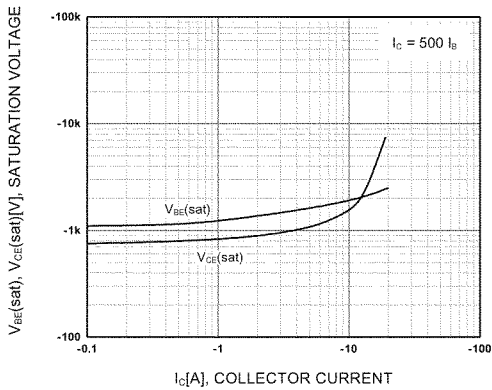


Figure 3. Collector-Emitter Saturation Voltage
 Base-Emitter Saturation Voltage

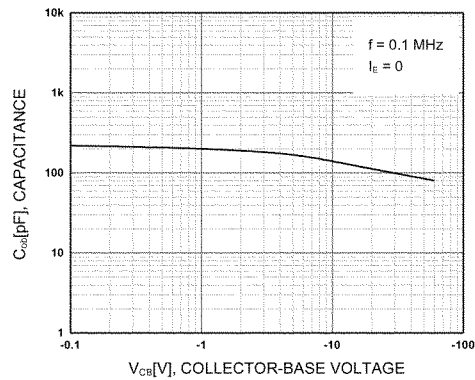


Figure 4. Collector Output Capacitance

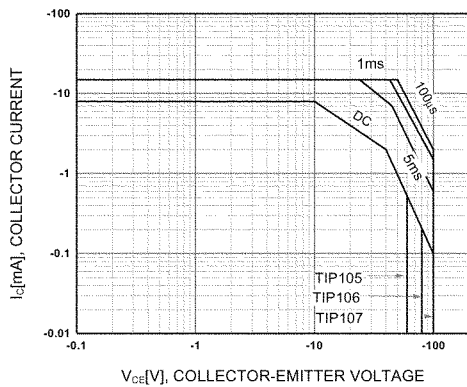


Figure 5. Safe Operating Area

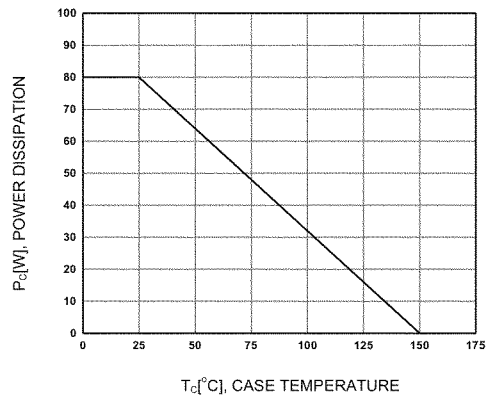


Figure 6. Power Derating